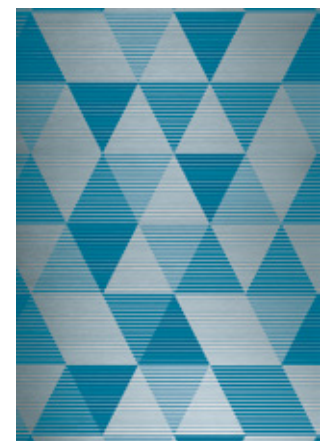
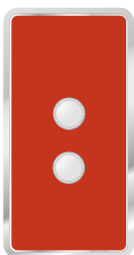
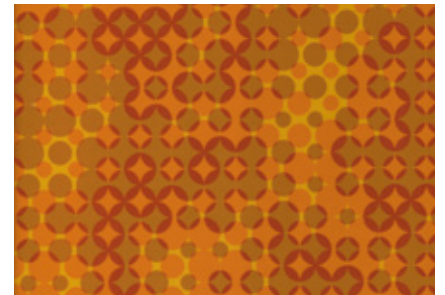
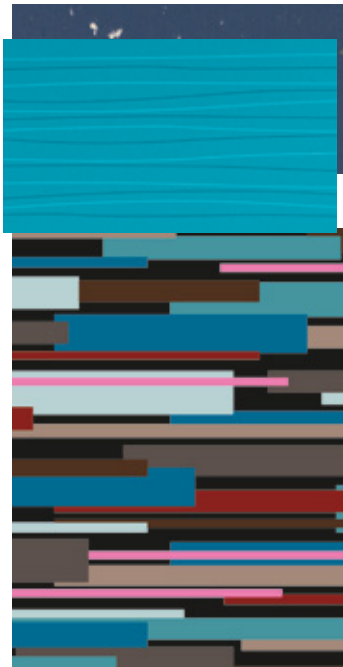
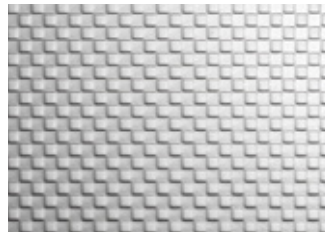


MATERIALS AND ACCESSORIES

KONE Design Collection

CREATING AN ELEVATOR	4
WALL FINISHES	6
FLOOR FINISHES	8
FRONT WALL FINISHES	10
CAR / LANDING DOOR FINISHES	11
SIGNALIZATION	12
CEILINGS	18
HANDRAILS	20
SEATS	21
BUFFER RAILS	21
SKIRTING	21
TENANT DIRECTORIES AND INFO SCREENS	22
MIRRORS	22



CREATING THE PERFECT ELEVATOR

When it comes to creating a consistent look and feel throughout your building, elevators play a key role. By freely combining KONE's flexible and versatile selection of materials and accessories, you can create an elevator interior that matches your building's design perfectly.

HOW TO CREATE YOUR CUSTOM ELEVATOR DESIGN

1 CHOOSE YOUR WALL, FLOOR, AND DOOR MATERIALS

Our wide range ensures that you can find the perfect combination to match your building's design, budget, and intended use requirements. For example, if durability and comfort are important, stone flooring is long-lasting and maintains its appearance even under heavy use, while colored or wood laminate wall finishes help to create a warm ambience inside the car. For a more exclusive look and feel, our patterned steel and 3D glass finishes can really make your elevator stand out.

2 SELECT YOUR CEILING DESIGN

KONE offers a wide range of different ceiling designs, equipped with modern and innovative lighting solutions that help create just the right atmosphere inside the elevator. Our ceilings are designed to give the best possible lighting quality while avoiding glare, ensuring every elevator trip is a pleasant and safe one. KONE's lighting solutions are also energy efficient – our LED lights use 80% less energy than traditional halogen lights.

3 CHOOSE YOUR ACCESSORIES

Our accessories are designed to increase convenience for passengers, and include options such as handrails, seats, car operating panels, information screens, and tenant directories. KONE accessories have been designed to meet the specific requirements of different users and building types. For example, we offer special graphics designed for car operating panels in senior housing and children's hospitals, as well as customizable solutions for office, hotel, and retail environments.

MATERIALS AND ACCESSORIES FOR ALL PURPOSES

This catalog presents our complete selection of elevator car interior materials and accessories. The options are grouped into two categories: standard and premium. Premium materials and accessories have been created using exclusive materials and components, and are designated with **P**.

Each carefully selected item has been designed to be both visually appealing and functional. The collection also contains several accessories that fulfill elevator accessibility and vandal codes.

The materials and accessories presented in this catalog are available for KONE MonoSpace® 500, KONE MonoSpace® 700, KONE MiniSpace™, KONE ReFresh™ 200, and KONE ReFresh™ 800.

For more design inspiration, take a look at the KONE Design Collection car interiors and create your own design with the KONE Car Designer tool: www.kone.XX/XXXX. Consult your KONE sales contact to discuss your final interior selection and for any additional information and support.

SELECTABLE CAR ELEMENTS



reddot design award
honourable mention 2012

Our award-winning horizontal wall panel design is visually appealing and creates a spacious feeling inside the elevator car.

Wall panel configuration

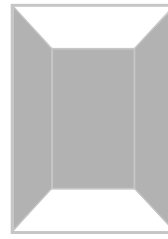
- All materials are available with vertical 2-panel per wall and horizontal 4-panel per wall designs for KONE MonoSpace® 500, KONE MonoSpace® 700, KONE MiniSpace™, and KONE ReFresh™ 800.
- KONE ReFresh™ 200 features a vertical 1-panel rear wall design. Side wall panel configuration will vary depending on car depth.

Material scaling & variability

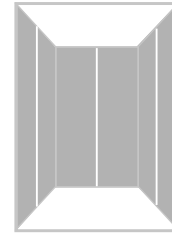
- Patterned images not to scale. Consult your sales representative to ask about the KONE Car Designer tool and to request material samples.
- Real wood laminates are made of natural materials so variation will occur.

Premium materials

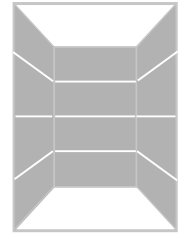
- Premium materials are designated by **P**. Premium materials, excluding Shangri-La Gold, are not available for KONE ReFresh 200.



Vertical 1-panel per wall



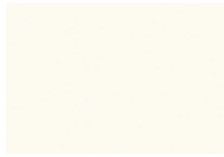
Vertical 2-panels per wall



Horizontal 4-panels per wall

Painted steel

Not available for KONE ReFresh™ 200



P50
Cloud White



P51
Misty Gray



P52
Sunny Yellow



P53
Dawn Red



P54
Sky Blue

Brushed stainless steel



F
Asturias Satin



SS1
Shangri-La Gold



H
Murano Mirror



SS2
Vegas Gold



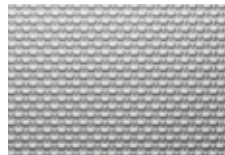
SS3
Paris Black

Mirror-polished stainless steel

Textured stainless steel



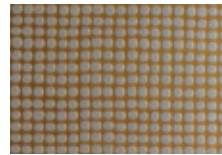
K
Scottish Quad



TS1
Flemish Linen



SS4
Aqua Weave



SS6
Sunlit Twill

Etched stainless steel



ES1
Silver Diamond

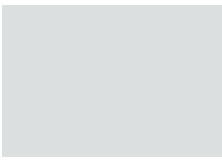


ES2
Silver Bamboo



ES3
Silver High-rise

Steel



Z
Zinc coated, local paint or decoration
Not available for KONE ReFresh™ 200.

Coated steel



R30
Nordic Gray

Wet-polished st. steel



A (AISI316) P
Acid-proof
Only available for KONE MonoSpace® 500 and KONE MonoSpace® 700 EN81-71 Cat. 1 compliant

Metallic laminate



L200
Oriental Gold



L201
Oriental Bronze
Due to the special characteristics of this material, the appearance of brush marks may vary between wall panels. Alignment of these markings cannot be guaranteed.

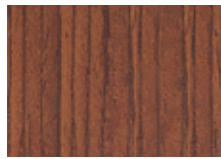
Laminate



L202
Hazel Oak



L203
Almond Oak



L204
Cherry Oak



L205
Ebony Oak



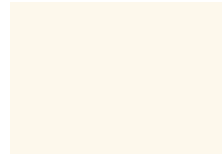
L206
Mandarin Orange



L207
Lime Green



L208
Lotus Blue



L209
Snowberry White



L226
Misty Gray



L227
Sunny Yellow
Only available for KONE ReFresh™ 200.



L228
Dawn Red
Only available for KONE ReFresh™ 200.

Printed laminate



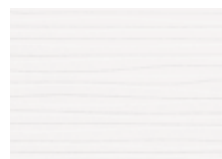
L210
Graphic Bamboo



L212
Color Cool



L215
Aqua Black P

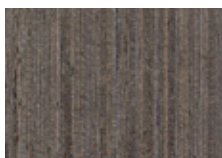


L216
Windwall White P

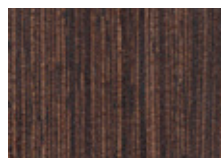
Real wood laminate



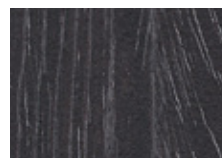
L219
Oak P



L220
Walnut P

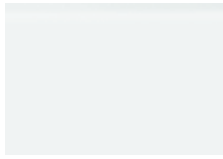


L221
Wenge P



L222
Black Oak P

Colored glass



GW1
Siberian Glaze



GW11
Soho Glaze



Transparent glass

Not available for KONE ReFresh™ 200



TW1
Glass

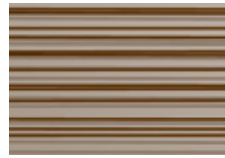
Patterned glass



G5*
Silver Flow



G7
Silver Chain



G11
Classic Bamboo



For KONE MonoSpace® 500, glass is available for the rear wall only and is one piece. For certain KONE MonoSpace® 700 and KONE ReFresh™ 800 ranges, glass side walls are also available. Please consult your KONE sales representative for details.

Note: Patterns on the glass are mirrors.

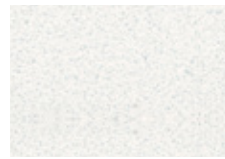
Metal plate



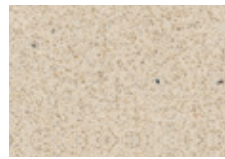
AL
Aluminum



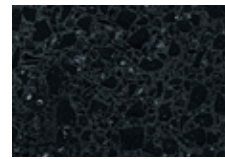
Stone



SF30
Chalk White



SF31
Grainy Sand

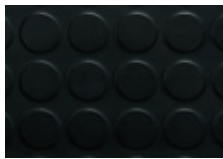


SF32
Diorite Black

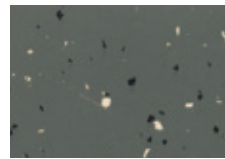


SF33
Brass Brown

Rubber



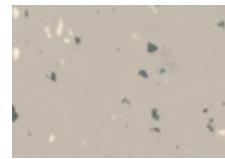
RC6
Dallas Black



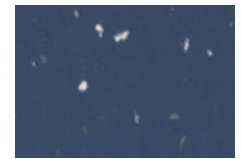
RC20
Smoke Gray



RC21
Denver Gray



RC22
Shell Gray

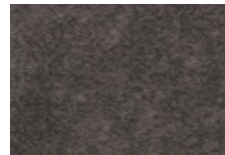


RC24
Dusk Blue

Vinyl



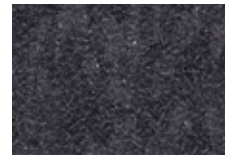
VF20
Ash Gray



VF22
Carbon Gray



VF23
Steel Gray



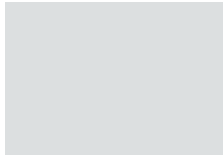
VF25
Flakey Gray

Local floor



0
Raw surface for
local finishing

Steel



Z
Raw surface for
local finishing

Coated steel



R30
Nordic Gray

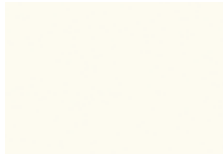
Wet-polished st. steel



A (AISI316) P
Acid-proof
Only available for
KONE MonoSpace® 500
and KONE MonoSpace® 700
EN81-71 Cat. 1 compliant

Painted steel

Not available for KONE ReFresh™ 200

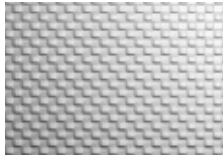


P50
Cloud White



P51
Misty Gray

Textured stainless steel



K
Scottish Quad



TS1
Flemish Linen



SS4
Aqua Weave

Brushed stainless steel



F
Asturias Satin



SS1 P
Shangri-La Gold

Mirror-polished stainless steel



H
Murano Mirror

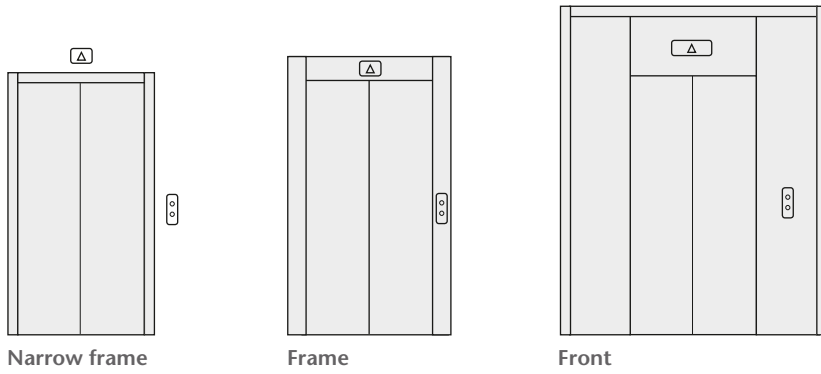


SS2 P
Vegas Gold



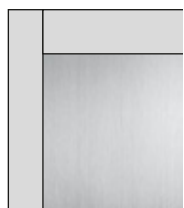
SS3 P
Paris Black

Landing door types

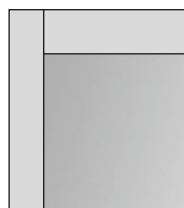


Note: Finishing availability varies according to door type. Consult your sales representative for more information.

Stainless steel



F
Asturias Satin

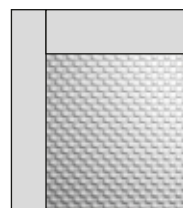


H
Murano Mirror **P**

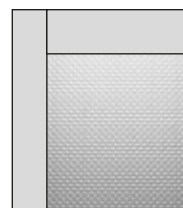


SS1
Shangri-La Gold **P**

Textured stainless steel



K
Scottish Quad

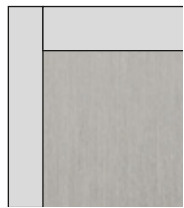


TS1
Flemish Linen



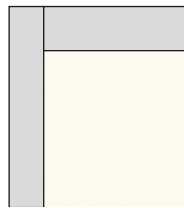
SS4
Aqua Weave

Coated steel

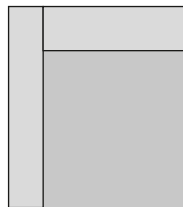


R30
Nordic Gray

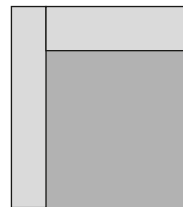
Painted steel



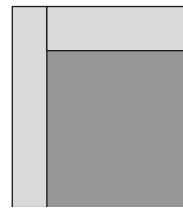
P50
Cloud White



P51
Misty Gray



P55
Thunder Gray
(landing door only)

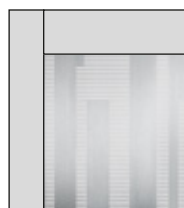


P
Painted steel

Etched stainless steel



ES2
Silver Bamboo **P**

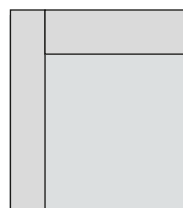


ES3
Silver High-rise **P**



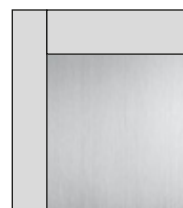
ES5
Brushed Bamboo **P**

Steel



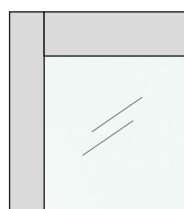
Z
Raw surface for local finishing

Wet polished st. steel



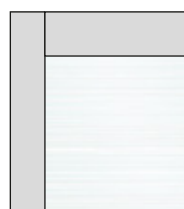
A (AISI316)
Acid-proof **P**
Only available for KONE MonoSpace® 500 and KONE MonoSpace® 700 EN81-71 Cat. 1 compliant

Glass



TW1
Transparent

Patterned transparent glass



G14
White Bamboo **P**



G12
London Lights **P**

KSS 140
FLUSH-MOUNTED VANDAL-RESISTANT SIGNALIZATION

Available with vertical paneling only
 EN 81-71 Cat. 1 compliant

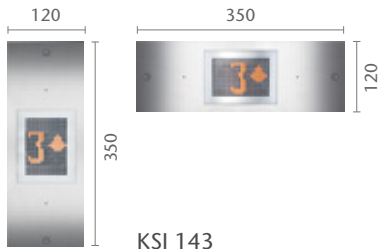


Car operating panel (COP)

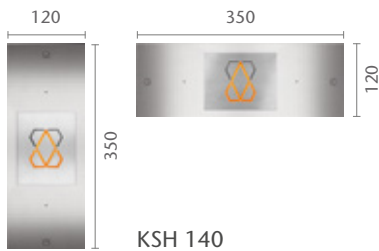
Faceplate finishings:
 Scottish Quad (K) stainless steel or Asturias Satin (F) stainless steel

Displays:
 Scrolling dot matrix

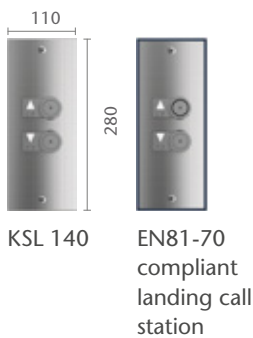
Landing devices



KSI 143



KSH 140



KSL 140

EN81-70 compliant landing call station

KSC 143
 Partial height

KSC 143
 Full height
 (width 225 mm)
 CH* to be extended

* Note: The exact height of the COP depends on the car height (CH) and the selected ceiling option.

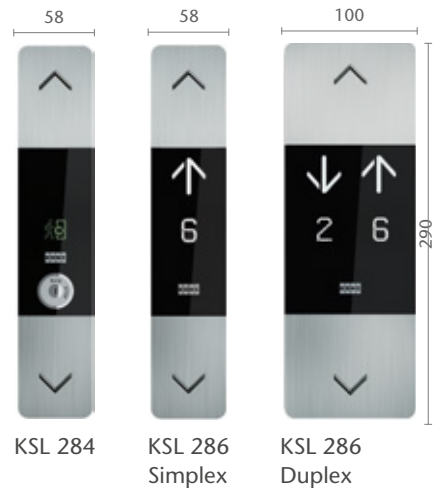
KSS 280
SURFACE/FLUSH-MOUNTED SIGNALIZATION



KSC 276
 Full height,
 flush mounted



KSC 286
 Partial height,
 surface mounted



KSL 284

KSL 286
 Simplex

KSL 286
 Duplex



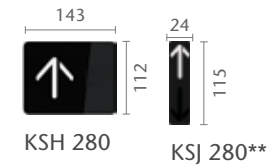
KSL 280

Car operating panel (COP)

Faceplate finishings:
 Black polycarbonate and deep-formed brushed stainless steel, vertical hairline

Displays:
 Segmented LCD

Landing devices



KSH 280

KSJ 280**



KSI 286

**Lantern in car



reddot design award
 winner 2012

KSS 420
SURFACE-MOUNTED SIGNALIZATION

Available with vertical paneling only
Not available for KONE ReFresh™ 200

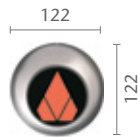


Car operating panel (COP)

Faceplate finishings:
Asturias Satin (F) stainless steel

Displays:
KSC 420: 7-segment
KSC 421: Dot matrix

Landing devices



KSH 470



KSI 470



KSI 471



KSL 420

KSC 420
Partial height

KSS 470
SURFACE-MOUNTED SIGNALIZATION

Available with vertical paneling only
Not available for KONE ReFresh™ 200

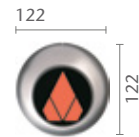


Car operating panel (COP)

Faceplate finishings:
Asturias Satin (F) stainless steel

Displays:
KSC 470: 7-segment
KSC 471: Dot matrix

Landing devices



KSH 470



KSI 470



KSI 471



KSL 470

KSC 471
Full height

* Note: The exact height of the COP depends on the car height (CH) and the selected ceiling option.

KSS 670
FLUSH-MOUNTED SIGNALIZATION



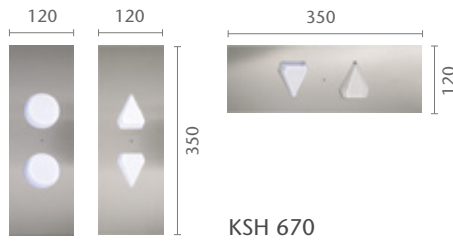
KSC 673/675
Full height

Car operating panel (COP)

Faceplate finishings:
Asturias Satin (F)
Murano Mirror (H)
Golden Mirror (HTIN) **P**

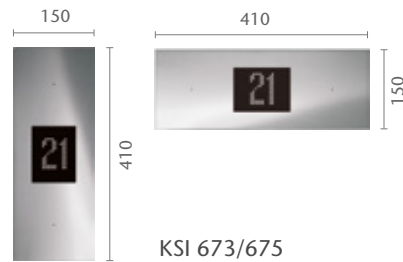
Displays:
KSC 673: Scrolling dot matrix
KSC 675: Black and white LCD

Landing devices

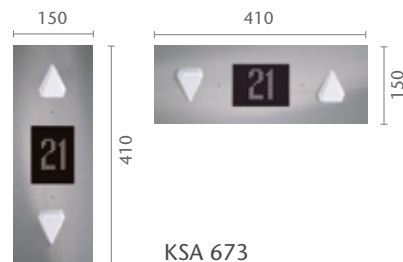


KSH 670

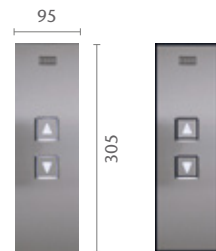
KSH 660



KSI 673/675



KSA 673



KSL 670

EN81-70
compliant
landing
call station

* Note The exact height of the COP depends on the car height (CH) and the selected ceiling option.

KSS 800
SURFACE-MOUNTED SIGNALIZATION

For KONE Destination Control System (DCS)
Not available for KONE ReFresh™ 200



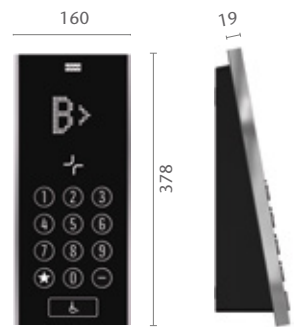
KSC 863
Full height

Car operating panel (COP)

Faceplate finishings:
Black polycarbonate

Displays:
KSC 863: Scrolling dot matrix
KSC 853 partial height also available
Width 200 mm, height 1300 mm

Destination operating panel (DOP)



KSP 853

Elevator identifier (EID)



KST 850
Passive

KST 860
Active



reddot design award
winner 2012

* Note The exact height of the COP depends on the car height (CH) and the selected ceiling option.

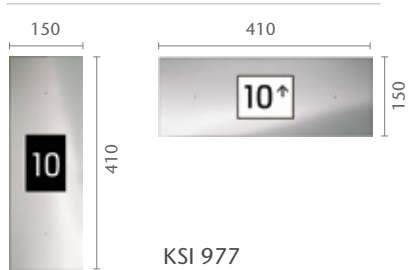


Car operating panel (COP)

Faceplate finishings:
Asturias Satin (F)
Murano Mirror (H)
Golden Mirror (HTIN) **P**

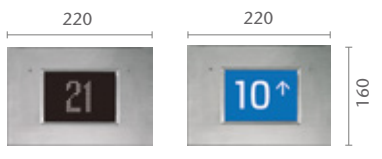
Displays:
KSC 977: LCD display

Landing devices



KSI 977

CH*



KSI 983/987**



KSL 670

EN81-70
compliant
landing
call station

KSC 977 **P**
Full height

** Note Only available for KONE MonoSpace® 700 and KONE MiniSpace™

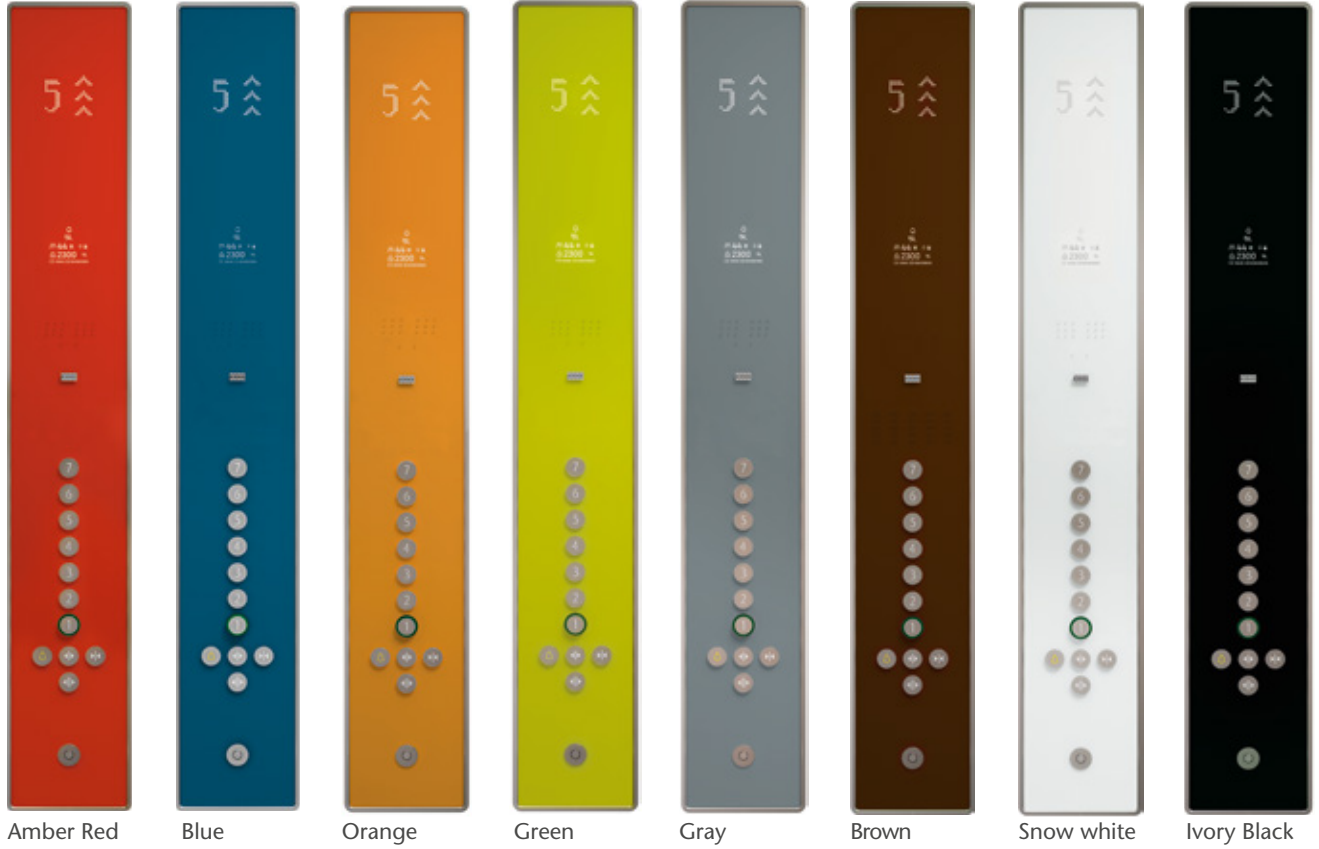
KONE DESIGN SIGNALIZATION

FACEPLATE ALTERNATIVES FOR KSS D-SERIES SIGNALIZATION (KSC D20, KSC D50, AND KSC D60)

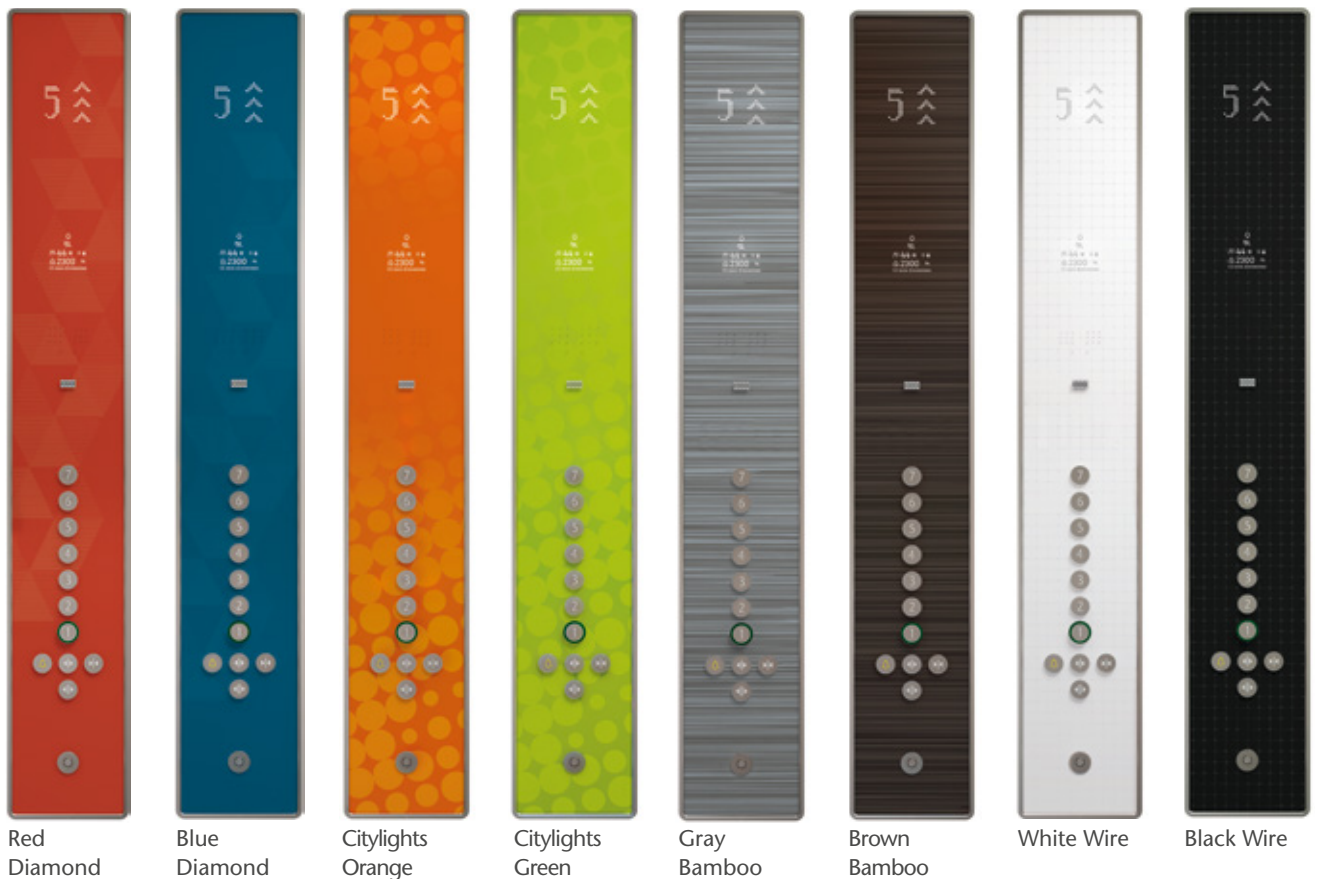
The D-series signalization is available in these KONE Design Signalization alternatives, in stainless steel and with unique designs. These are KONE Design Signalization examples of the KSC D20 partial-height COP.

Partial-height COP (width 200 mm, height 1300 mm)

Solid colors



Patterned colors



KSS D-SERIES SIGNALIZATION

KSC D20 SERIES

Partial-height
COP



▲
Width 200 mm,
Height 1300 mm
KSC D23,
Brushed stainless steel

KSC D50 AND D60 SERIES

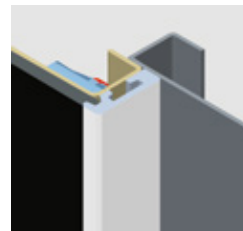
Full-height
COP



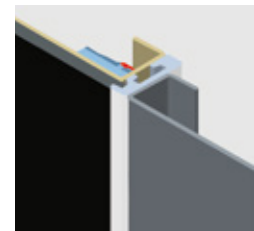
◀
Width 225 mm,
Height depends on car height (CH) and
selected ceiling option
KSC D53 surface mounted
and KSC D63 flush mounted,
Brushed stainless steel

UNIQUE DESIGNS

Available for partial and full-height
COP



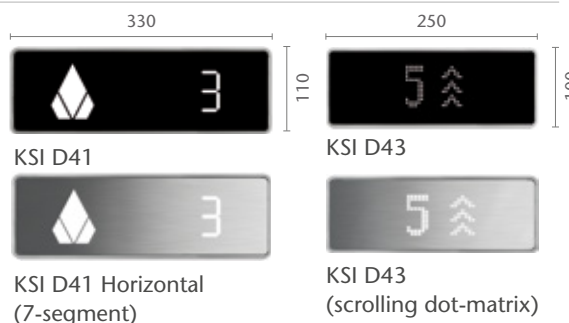
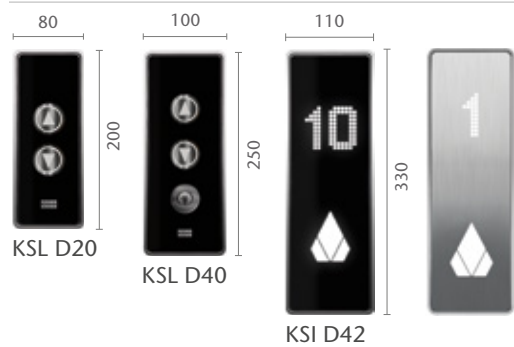
KSC D53



KSC D63

LANDING DEVICES

Hall lantern indicators



Hall lantern



EN81-70 compliant landing device available for all color options
Note: Custom designs are also available. Contact your KONE sales representative for more information.

Indicator faceplate material is always polycarbonate. The landing call stations are also available in stainless steel.



Type: **RL12**, Integrated ceiling
 Finishings: Asturias Satin (F)
 Cloud White (P50)
 Misty Gray (P51)
 Lighting: LED spotlights, round
 Note: Only available for KONE MonoSpace® 500



Type: **CL80**
 Finishings: Asturias Satin (F)
 Cloud White (P50)
 Murano Mirror (H) **P**
 Lighting: KONE Eco spotlights, round



Type: **CL88**
 Finishings: Asturias Satin (F)
 Cloud White (P50)
 Murano Mirror (H) **P**
 Lighting: LED spotlights, round



Type: **RL14**
 Finishings: Asturias Satin (F)
 Cloud White (P50)
 Misty Gray (P51)
 Lighting: Roof integrated, direct lighting LED panel
 Note: Only available for KONE MonoSpace® 500



Type: **CL94**
 Finishings: Asturias Satin (F)
 Cloud White (P50)
 Murano Mirror (H) **P**
 Lighting: T5 fluorescent tubes
 Note: EN81-71 Cat. 1 compliant version available



Type: **CL95**
 Frame finishing: Asturias Satin (F)
 Murano Mirror (H) **P**
 Center panels: Cloud White (P50) painted steel
 Lighting: T5 fluorescent tubes



Type: **CL97**
 Finishing: Asturias Satin (F)
 Murano Mirror (H) **P**
 Shangri-La Gold (SS1) **P**
 Lighting: LED spotlights, square



Type: **CL98**
 Finishing: Asturias Satin (F)
 Murano Mirror (H) **P**
 Lighting: LED spotlights, rectangular

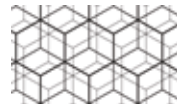


Type: **CL104**
 Frame finishing: Asturias Satin (F)
 Murano Mirror (H) **P**
 Center panels: Cloud White (P50) painted steel
 Lighting: T5 fluorescent tubes



Type: **CL151**
 Frame finishings: Asturias Satin (F)
 Shangri-La Gold (SS1)
 Lighting: LED panel with frosted white diffuser,
 plain or with graphics

Graphic options for LED panel



1
Geometric



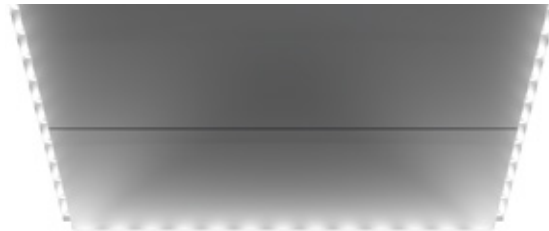
2
High-Rise



3
Bamboo



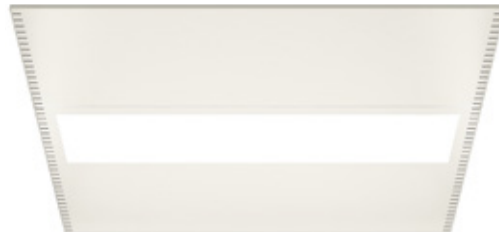
Type: **CL162**
 Finishings: Asturias Satin (F)
 Murano Mirror (H)
 Top panel: Cloud White (P50) painted steel
 Lighting: T5 Fluorescent tubes and LED spotlights, square



Type: **CL181**
 Finishings: Asturias Satin (F)
 Murano Mirror (H)
 Shangri-La Gold (SS1)
 Vegas Gold (SS2)
 Lighting: LED
 See below for CL181 ceiling installed in car and page 23 for full car image.

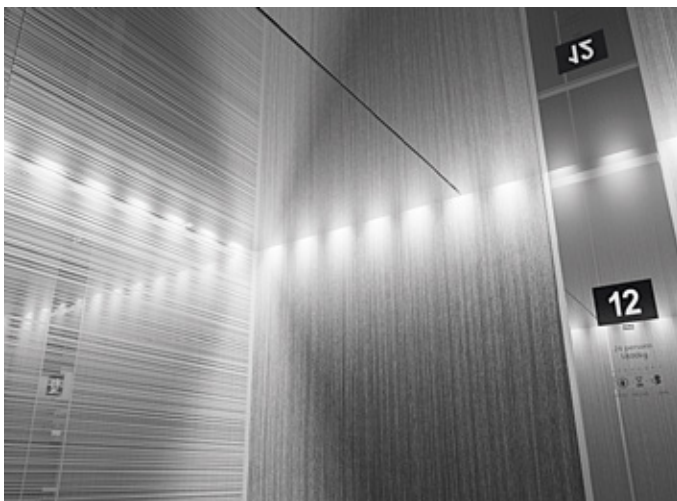


Type: **CL193**
 Frame finishing: Asturias Satin (F)
 Center panels: Cloud White (P50) painted steel
 Lighting: T5 fluorescent tubes

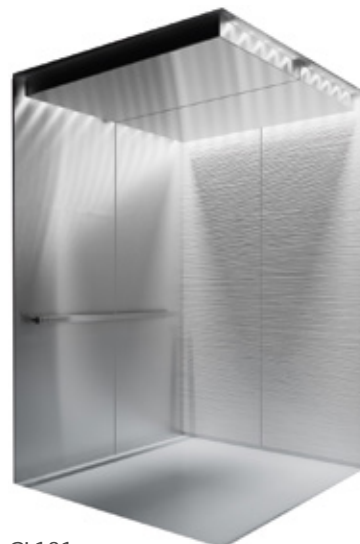


Type: **LF1**
 Frame finishing: Asturias Satin (F)
 Cloud White (P50) painted steel
 Misty Gray (P51) painted steel
 Lighting: T5 fluorescent tubes

Note: Only available for KONE MonoSpace® 700;
 EN81-71 Cat. 1 compliant version available



CL181 ceiling installed in car



CL181



HR61*
Round
Finishings:
Brushed stainless steel (F)
Mirror-polished stainless steel (H) **P**



HR62
Square
Finishings:
Brushed stainless steel (F)
Mirror-polished stainless steel (H) **P**



F
Brushed stainless steel



H **P**
Mirror-polished stainless steel



HR63 **P**
Flat
Finishings:
Brushed stainless steel (F)
Mirror-polished stainless steel (H)



HR64*
Round, bent ends
EN 81-71 Cat. 1 compliant
Finishings:
Brushed stainless steel (F)
Mirror-polished stainless steel (H) **P**
Golden brushed stainless steel (SS1) **P**



SS1 **P**
Golden brushed stainless steel



HR65*
Triangular, bent ends EN 81-71 Cat. 1 compliant
Finishings:
Brushed stainless steel (F)
Mirror-polished stainless steel (H) **P**



HR81*
Round, side-wall and floor mounted
Finishings:
Brushed stainless steel (F)
Mirror-polished stainless steel (H) **P**
Golden brushed stainless steel (SS1) **P**
Not available for KONE ReFresh™ 200



HR94 **P**
Round, bent ends
EN 81-71 Cat. 2 compliant
Finishings:
Brushed stainless steel (F)
Only available for KONE MonoSpace® 700 and KONE MiniSpace™



HR31
Round aluminum (LBE) with black end caps



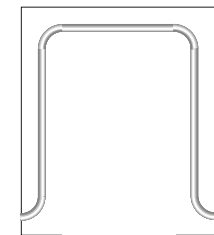
HR34
Round aluminum (LBE), bent ends with black end caps



HR71**
Round
Dark Wood with brushed stainless steel fixings (WDF)



HR71**
Round
Light Wood with brushed stainless steel fixings (WLF)

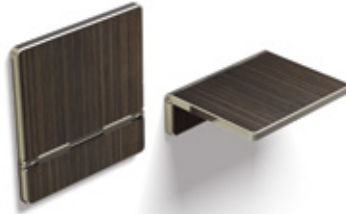


* Also available as a continuous handrail

** Golden brushed stainless steel fixings also available **P**



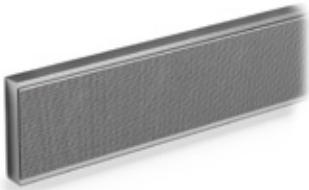
FS1
L202
Hazel Oak



FS1
L205
Ebony Oak



FS1
L224
Black Coal



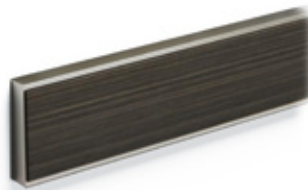
BR1
Flemish Linen (TS1)



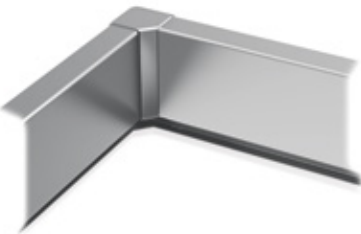
BR1
Lava Black (RC26)



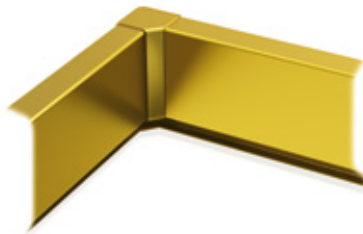
BR1
Light Wood (WL) P



BR1
Dark Wood (WD) P

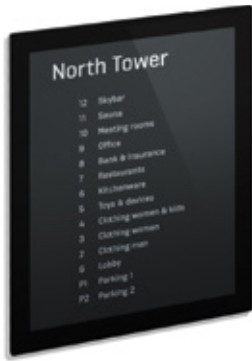


F
Asturias Satin



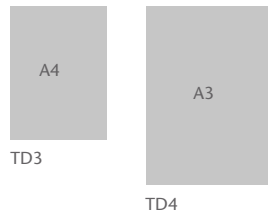
SS1
Shangri-La Gold P

Tenant directory



The printed tenant directory is completely customizable and can be easily updated according to customer needs.

Sizes



Directories can be installed either vertically or horizontally.

TD3

Frame finishing: brushed or polished aluminum
Brushed stainless steel base, tempered glass door

Digital info screens



IS08

Standard version, 8.4" display
Surface mounted

IS15

Premium offline version, 15" display* P
Surface mounted or flush mounted

Frame finishing: brushed or polished stainless steel

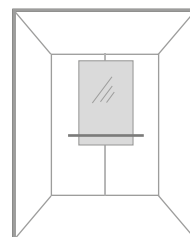
Additional features may be available. Consult your sales representative for more information.

* Note: Not available for KONE MonoSpace® 500

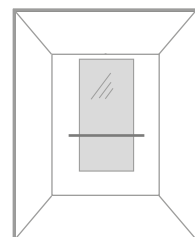


Sizes and positioning

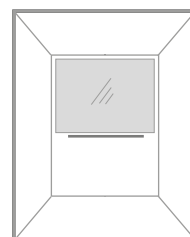
Mirrors can be located on the rear and side walls of the elevator car. Mirror and handrail dimensions are determined by the wall width. Please consult your KONE sales representative for details.



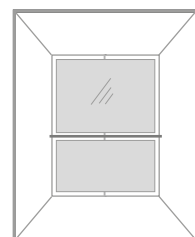
MR1
Partial width/Partial height



MR1
Partial width/Mid height



MR1 P
Full width/Partial height



MR1 P
Full width/Full height



KONE provides innovative and eco-efficient solutions for elevators, escalators, automatic building doors and the systems that integrate them with today's intelligent buildings.

We support our customers every step of the way: from design, manufacturing and installation to maintenance and modernization. KONE is a global leader in managing the smooth flow of people and goods throughout buildings.

This makes us a reliable partner throughout the life cycle of buildings. We are fast, flexible, and we have a well-deserved reputation as a technology leader, with such innovations as KONE MonoSpace®, KONE NanoSpace™ and KONE UltraRope®.

KONE employs over 55,000 dedicated experts to serve you globally and locally.

KONE CORPORATION

Head office

Kartanontie 1
P.O. Box 8
FI-00331 Helsinki
Finland
Tel. +358 (0)204 751

Corporate offices

Keilasatama 3
P.O. Box 7
FI-02151 Espoo
Finland
Tel. +358 (0)204 751

www.kone.com